



NSE Sunny Isles Beach K-8 FAST Grades K-2

March 12, 2025

Assessment Schedule

April 2025

< Today >

Sun	Mon	Tue	Wed	Thu	Fri	Sat
30 Eid al-Fitr	31 Eid al-Fitr (o...	Apr 1 April Fools'...	2	3 Gr4-5 Writing	4 Gr 6-8 Writing	5
6	7 Gr 4-8 Writing Make-up	8	9	10	11	12 Passover
13 Palm Sunday	14 Gr K Math F...	15 Tax Day Gr K Early Li...	16 Gr 1 Math FA...	17 Gr 1 Reading...	18 Good Friday	19
20 Easter Orthodox Ea...	21 Gr 2 Math F...	22 Earth Day Gr 2 Reading...	23 Gr K-2 ESE/5... Gr K-2 READING / MATH Make-up	24 Gr K-2 ESE/5...	25	26
27	28	29	30	May 1 Gr 3-5 FAST...	2 Gr 6-8 FAST...	3
4	5 Cinco de Ma... Gr 3-5 FAST...	6 Gr 6-8 FAST...	7 Gr 3-8 Reading Math Make - up	8	9	10 2

Who is Tested?

FAST Grades K-2

- All students enrolled in grades K-2, including:
 - SPED/Section 504
 - ELL
 - Full time virtual students will test remotely for all 3 progress monitoring windows.

Non-Participation Status



- Assessment Inappropriate
 - Blind/Visually Impaired
 - Deaf/Hard of Hearing
 - Medical Exemption
- Failed Practice:
 - **K-2** must attempt the practice 2 separate times
- Not Present During Testing Window (test students with chronic absences first)
- Non-English Speaker (Star is administered in English only)
 - ELL students who fail the practice items should be marked as **Non-English Speakers**.



RENAISSANCE

Star Early Literacy



- Assesses three broad domains
- 27 questions
- 20 minutes average test length
- Headphones required



What does Star Early Literacy assess?



10-Key Early Literacy Sub-Domains

- Visual Discrimination
- Alphabetic Principle
- Concept of Word
- Phonemic Awareness
- Phonics
- Structural Analysis
- Vocabulary
- Sentence-Level Comprehension
- Paragraph-Level Comprehension
- Early Numeracy

Pre-reading
skills
assessment



RENAISSANCE **Star** Reading®

- Items test skills in five key reading domains
- 34 items
- 20 minutes average test length



What does Star Reading assess?



5-Key Reading Domains

- Word Knowledge and Skills
- Comprehension Strategies and Constructing Meaning
- Analyzing Literary Text
- Understanding Author's Craft
- Analyzing Argument and Evaluating Text



RENAISSANCE **Star Math**[®]



- Items test skills in four broad Mathematics domains
- 34 items
- 30 minutes average test length
 - Kindergarten, 1, and 2 in Florida
- Headphones are required
 - Audio has been enabled for all K-2
- Scratch paper is required

What does Star Mathematics assess?



4-Broad Mathematics Domains

- Numbers and Operations
- Algebra
- Geometry & Measurement
- Data Analysis, Statistics & Probability



FAST: Star Assignments by Grade

FAST assessments in VPK through grade 2 will be administered using Renaissance Learning’s Star Early Literacy, Star Reading, and Star Mathematics. The table below demonstrates which test each student will take in each grade.

Use the following guidelines to determine which assessment to administer:

Grade Level	Star Early Literacy	Star Reading	Star Math
VPK	PM1, PM2, PM3		
Kindergarten*	PM1**, PM2**, PM3**		PM1, PM2, PM3
First Grade*	PM1, PM2**	PM3***	PM1, PM2, PM3
Second Grade***		PM1, PM2, PM3	PM1, PM2, PM3

*All students in Kindergarten and First Grade will take **Star Early Literacy** in PM1. If a current First Grade student scored 852 or above on SEL AND was assessed with Star Reading in the previous school year, they may continue with Star Reading in PM1.

Students who receive a Scaled Score of 852 or higher on **Star Early Literacy are considered “probable readers” and may be assessed using **Star Reading** beginning with the next progress monitoring (PM) window.

***First Grade students during PM3 and Second Grade students during all three PM windows must attempt **Star Reading**. If the student does not pass the practice items after two attempts, the district should administer **Star Early Literacy** to the student to gain additional instructional information.

FAST: Star Preparing for Administration,

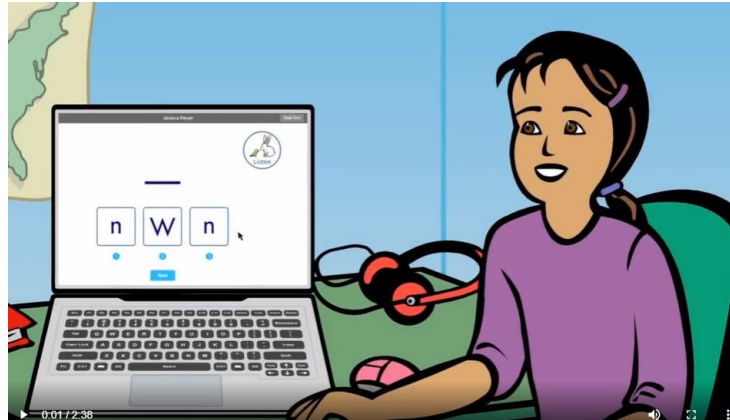


- Each test will be administered in one session.
 - Students take **only one** subject test in a day.
 - Students will complete the Star Mathematics assessment before the Star Early Literacy or Star Reading.
- Schools will provide scratch paper for Star Mathematics.
 - No calculators, manipulatives, or reference materials when answering mathematics items
- Headphones are required for Star Early Literacy and Star Mathematics assessments
 - Headphones are not required for Star Reading, but may be provided to reduce noise



Student Introductory Video

Teachers will familiarize students with using a keyboard, mouse, or trackpad prior to test administration.



- [Student Introductory Video](#)
- [Student Introductory Video - Tablet](#)

Parent Letters



- Parent Letters will be distributed the Week of April 1, 2025.
- According to Florida Statutes, all public school students are required to participate in statewide assessments, including the FAST assessments in VPK – 2.



Star K-2 Accommodated Materials



- Paper-based assessments are available for the Florida Assessment of Student Thinking (FAST) K–2 in regular print, large print, one-item-per-page formats, and Braille:
 - Kindergarten: **Only** Star Mathematics
 - Grade 1
 - Star Mathematics
 - Star Reading
 - Grade 2
 - Star Mathematics
 - Star Reading
- Please note that there are no paper-based accommodations for Star Early Literacy.



Administering FAST with accommodations

Available computer-based accommodations (Refer to the Accommodations Guide)

Accommodation	Star Early Literacy	Star Reading	Star Math
Highlighter		X	X
Line reader		X	X
Response masking		X	X
Audio support			X*
Calculator			X**
Color contrast		X	X
Font size/zoom	X	X	X
Extended time (Under student preferences)	X	X	X
Unlimited time		X	X

K-2 FAST CBT Accommodations: ESE Students with IEP or 504 Plan



ESE Students with IEP or Section 504 | Same accommodations as on other statewide assessments:

- Flexible Setting
- Flexible Scheduling
- Extended time (listed under Student Preferences)
- Unlimited Time (under Accommodations – 15 minutes per item)



K-2 FAST Accommodations: English Language Learners

ELLs | Same accommodations as on other statewide assessments.

- Flexible Setting
- Flexible Scheduling
- Assistance in Heritage Language
- Approved Dictionary or Glossary
- **Extended time** (listed under Student Preferences)
- Unlimited Time (under Accommodations – 15 minutes per item)

Administrations of the Spanish or any other language version of STAR are **not** allowed for the statewide FAST testing program.

Administering FAST with accommodations



Extended and Unlimited time

Beginning in Fall 2023/PM1, the standard item time limits have been **extended by one minute** for each item for all students.

Extended time can only be enabled for K–2 students who **have an IEP or Section 504 Plan** listing an extended time accommodation.

- Unlimited time should be assigned **only to students: with an IEP or Section 504 Plan** who need more time than the extended time, if they are ELLs; or if they receive oral presentation and need to ensure the question does not time out while they are receiving their accommodation.



Extended Time Limits

RENAISSANCE

Star Early Literacy®

**150 seconds
per item**

*Extended: 450 sec

RENAISSANCE

Star Math®

**240 seconds
per item**

*Extended: 480 seconds



RENAISSANCE

Star Reading®

**120 sec per item
(first 10 items)**

*Extended: 360 sec

**180 sec per item
(remaining skill items)**

*Extended: 405 sec

Extended time feature is listed under **Student Preferences**, not the accommodations tab.

2023–2024 K–2 FAST Star Renaissance Timing Chart

Star Early Literacy, Star Reading, and Star Math

Includes time per question and accommodation (extended or unlimited time) as well as approximate total time needed if maximum time per question is used.

	Star Early Literacy		Star Reading		Star Math		Star Reading & Star Math (Not available for Star Early Literacy)
	Standard	Extended	Standard	Extended	Standard	Extended	Unlimited Time
Time Per Question	#1–27 2.5 minutes	#1–27 7.5 minutes	#1–10 2 minutes	#1–10 3 minutes	#1–34 4 minutes	#1–34 8 minutes	#1–34 15 minutes
			#11–34 3 minutes	#11–34 6 minutes			
Maximum Amount of Time	68 minutes (Approximately 1 hour, 8 mins.)	203 minutes (Approximately 3 hours, 22 mins.)	92 minutes (Approximately 1 hour, 32 mins.)	174 minutes (Approximately 2 hours, 54 mins.)	136 minutes (Approximately 2 hours, 16 mins.)	272 minutes (Approximately 4 hours, 32 mins.)	510 minutes (Approximately 8 hours, 30 mins.)

Dismissal policy is a local decision. Students do not have to remain in the testing room for the maximum time limit.

Practice Test Items for Star

- Star Early Literacy
 - Students will have practice items each time prior to the assessment
- Star Reading and Star Math
 - Students who have not taken a Star Reading or Star Math test in the past 180 days, must answer the practice questions prior to starting the test.



Test Security



Test Security Policies and Procedures



Electronic Devices

- Students are **not** permitted to have any electronic devices during testing or during breaks, even if they are turned off or students do not use them.
- **If a student is found with an electronic device or is found using Bluetooth/wireless headphones/earbuds during testing or during a break, the student's test must be invalidated.**
- Health Monitoring Application (Diabetes/Bluetooth Hearing Aids): Students who require the use of an electronic device for a purpose specified on his or her Individual Educational Plan (IEP) or Section 504 Plan may have access to the device during testing.
- Students found with an electronic device must have their device checked to ensure that there are no photos of secure test content and that no secure test content has been shared via text, email, and/or social media.

Star Reports



Sample Grades K-2 FAST Star Early Literacy, Reading, and Mathematics



Star Mathematics

[View All Tests](#)**New!**

Your Child's Most Recent Test
Star K-2 Mathematics

Date Taken:
05/01/2024

Test Window:
PM3 2023-24

Score:
62



Well Below Grade Level: Students who score in Level 1 demonstrate well below grade level skills but are not yet demonstrating On Grade Level success with the challenging content on the B.E.S.T. Standards. To be prepared for the next grade, they are likely to need substantial support. Be sure to check with your student's teacher to learn about FAST and how you can encourage their efforts at home. For more information on Star Assessments, [click here](#).



Star Early Literacy

[View All Tests](#)**New!**

Your Child's Most Recent Test
Star K-2 Early Literacy

Date Taken:
04/30/2024

Test Window:
PM3 2023-24

Score:
80



Well Below Grade Level: Students who score in Level 1 demonstrate well below grade level skills but are not yet demonstrating On Grade Level success with the challenging content on the B.E.S.T. Standards. To be prepared for the next grade, they are likely to need substantial support. Be sure to check with your student's teacher to learn about FAST and how you can encourage their efforts at home. For more information on Star Assessments, [click here](#).



Star Reading

[View All Tests](#)**New!**

Your Child's Most Recent Test
Star K-2 Reading

Date Taken:
04/22/2024





Test Window:
PM3 2023-24

Score:
208



Proficient: Students who score in Level 4 demonstrate proficient success with the challenging content on the B.E.S.T. Standards. They are likely to excel in the next grade. Be sure to check with your student's teacher to learn about FAST and how you can encourage their efforts at home. For more information on Star Assessments, [click here](#).

Renaissance Default/District Benchmarks

Default benchmarks for Star Early Literacy, Star Reading, and Star Math		
Category	Description	Default cut score
 At/Above Benchmark (green)	Students meeting or exceeding the benchmark score	At/Above 40 PR
 On Watch (blue)	Students slightly below the benchmark score	Automatically calculated range between At/Above Benchmark and Intervention
 Intervention (yellow)	Students below the benchmark score	Below 25 PR
 Urgent Intervention (red)	Students far below the benchmark score	Below 10 PR

FAST Equivalent Score & Unified Concordance

Vertical Link Between Renaissance Star Unified Scale and BEST Scale

Star Early Literacy and Star Reading Concordance Table										
	Level 1		Level 2		Level 3		Level 4		Level 5	
	Unified	FAST	Unified	FAST	Unified	FAST	Unified	FAST	Unified	FAST
Grade K	Below 729	Below 114	729-787	114-133	788-825	134-146	826-869	147-161	At/Above 870	At/Above 162
Grade 1	Below 791	Below 135	791-843	135-152	844-893	153-169	894-946	170-187	At/Above 947	At/Above 188
Grade 2	Below 882	Below 166	882-931	166-182	932-970	183-195	971-1014	196-210	At/Above 1015	At/Above 211

Star Math Concordance Table										
	Level 1		Level 2		Level 3		Level 4		Level 5	
	Unified	FAST	Unified	FAST	Unified	FAST	Unified	FAST	Unified	FAST
Grade K	Below 751	Below 101	751-793	101-118	794-827	119-132	828-861	133-146	At/Above 862	At/Above 147
Grade 1	Below 821	Below 130	821-861	130-146	862-893	147-159	894-922	160-171	At/Above 923	At/Above 172
Grade 2	Below 889	Below 158	889-919	158-170	920-953	171-184	954-992	185-200	At/Above 993	At/Above 201

How Parents Can Support the TEAM

☐ Create a Positive Environment

Encourage a calm and supportive atmosphere at home.

Provide a quiet, distraction-free study space.

☐ Establish a Routine

Set a consistent schedule for study and relaxation.

Ensure students get enough sleep, especially the night before tests.

☐ Encourage Healthy Habits

Promote nutritious meals for brain power.

Encourage physical activity to reduce stress.

How Parents Can Support the TEAM

☐ Practice Test-Taking Strategies

Help children review test formats and types of questions.

Conduct practice tests to build confidence.

☐ Stay Positive and Motivated

Offer words of encouragement and support.

Celebrate efforts, not just results.

☐ Communicate with Teachers

Reach out to teachers for insights into how to best support learning.

Ask about specific areas to focus on in preparation.

How Parents Can Support the TEAM

Practice Test-Taking Strategies

Help children review test formats and types of questions.

Conduct practice tests to build confidence.

Stay Positive and Motivated

Offer words of encouragement and support.

Celebrate efforts, not just results.

Communicate with Teachers

Reach out to teachers for insights into how to best support learning.

Ask about specific areas to focus on in preparation.

How Parents Can Support the TEAM

☐ Be Mindful of Stress

Recognize signs of anxiety and stress in your child.

Teach relaxation techniques, like deep breathing or mindfulness.



Resources for Students & Parents

[FDOE B.E.S.T.
Assessment
Resources](#)

[2024–2025 Florida
Assessment of
Student Thinking
\(FAST\) Fact
Sheets](#)

[Understanding
Florida Statewide
Assessments
Reports for
Families](#)

[Family Portal](#)

Thank You!

