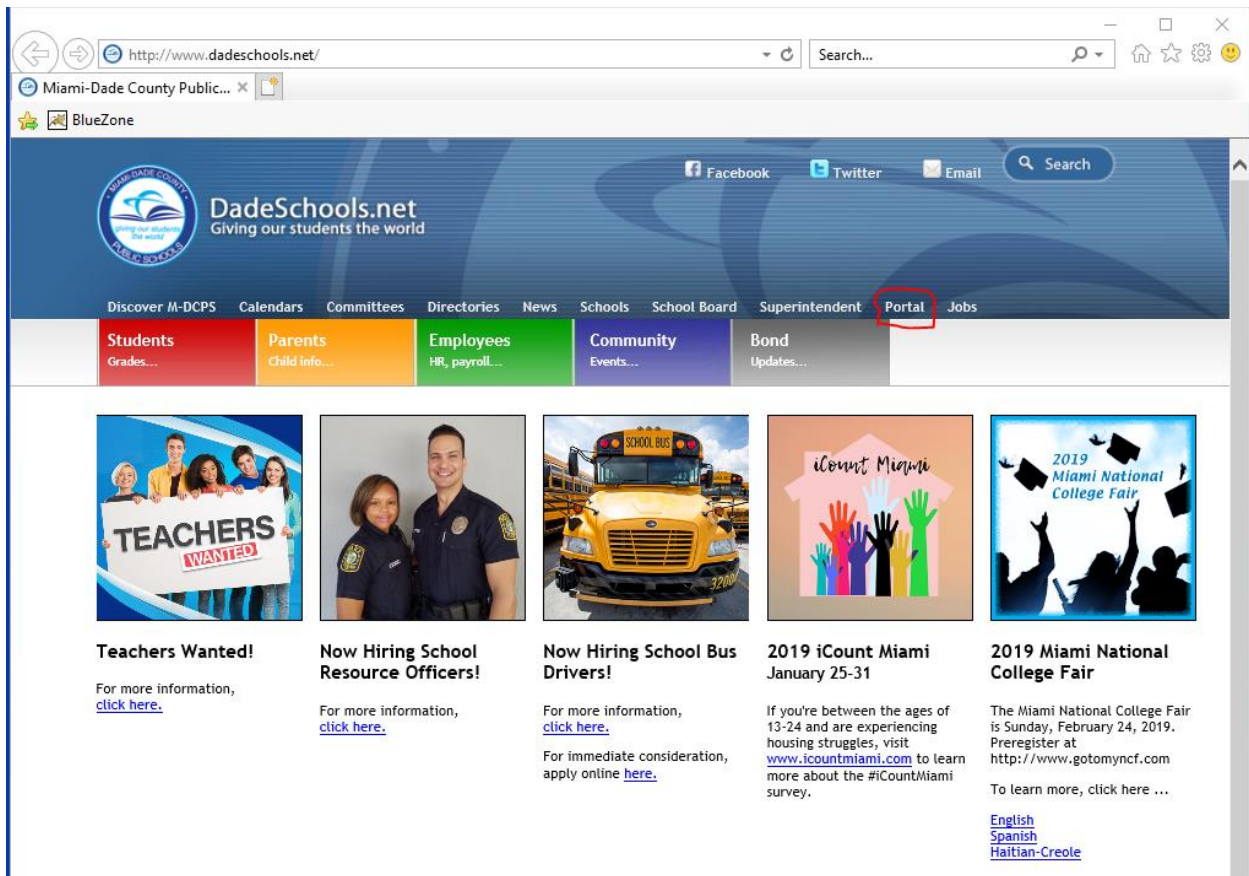


BlueZone - Client Installation

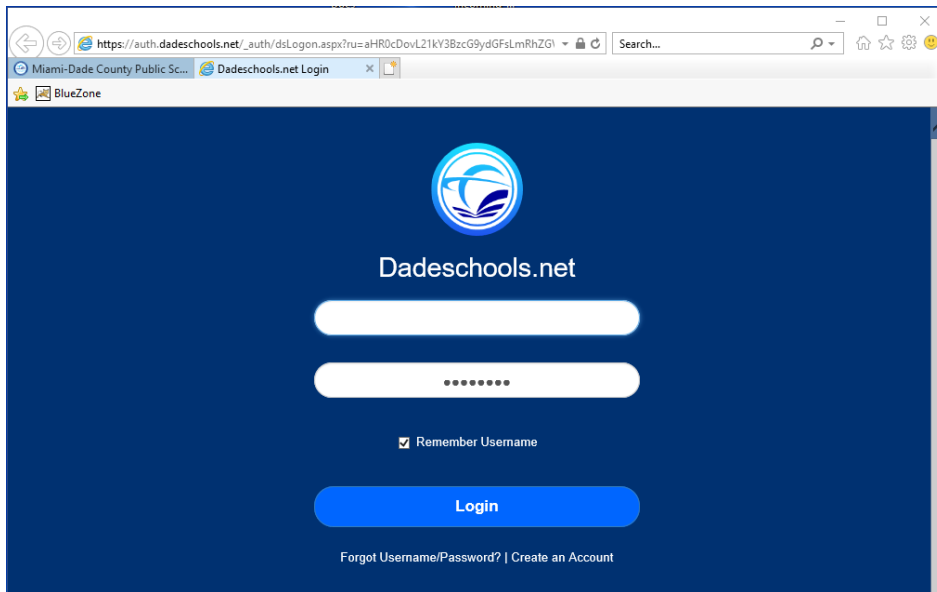
First Steps

You can only follow these instructions and install BlueZone if you are an administrator on your machine. If you are not an administrator on your machine, please contact your site-based technician who will assist you.

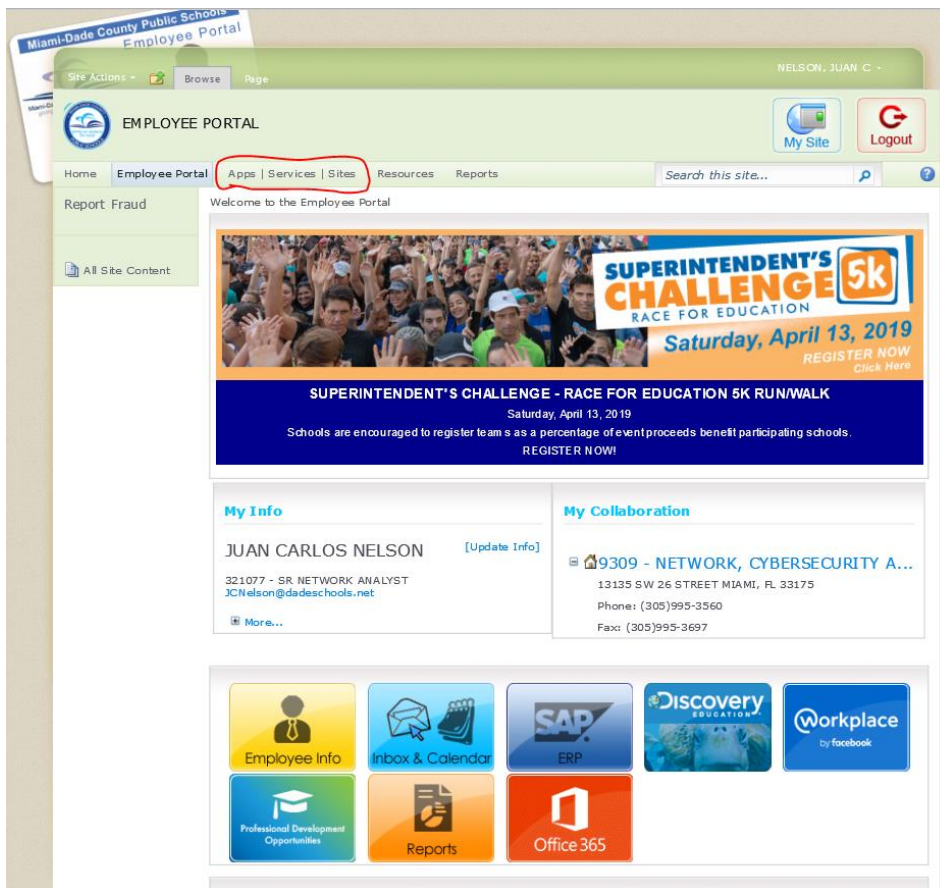
From your browser, for the moment Internet Explorer and Chrome are supported, go to <http://www.dadeschools.net/>, click on the white “**Portal**” link to log into Employee Portal:



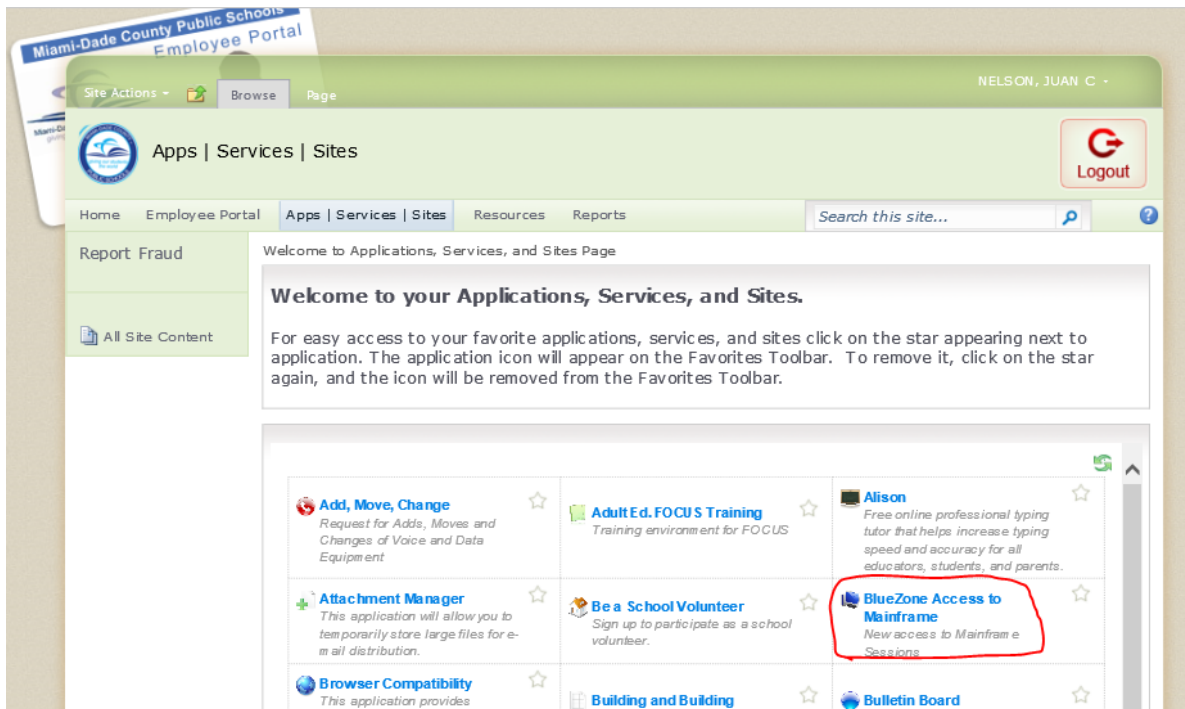
Type your Employee Number and password (the new “long” password):



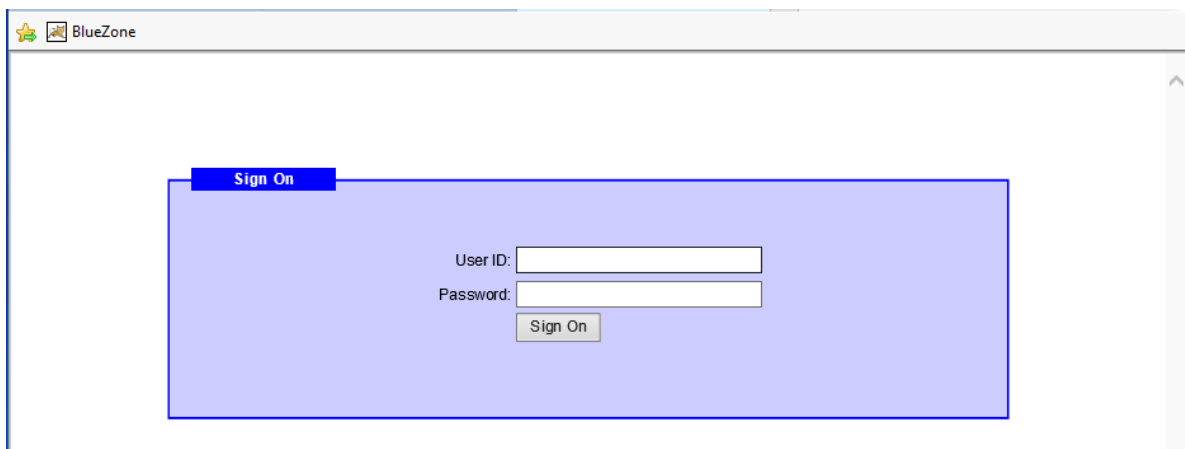
Then, click on **Apps | Services | Sites**:



Click on **BlueZone Access to Mainframe**:



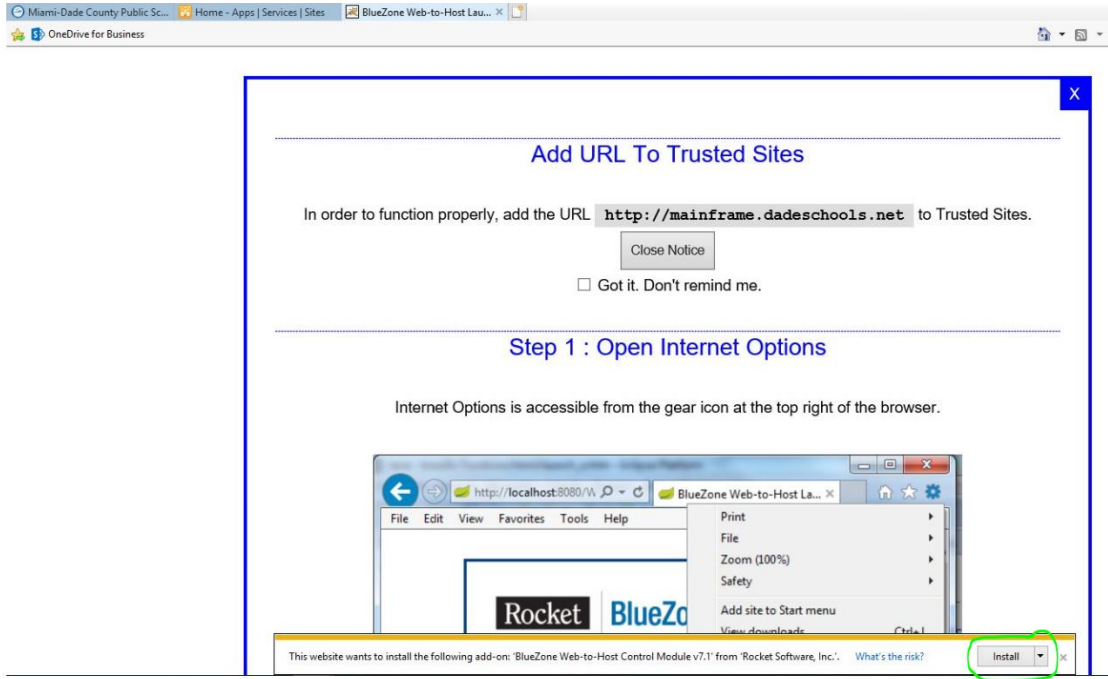
Enter your Employee Number and your password (the new “long” password):



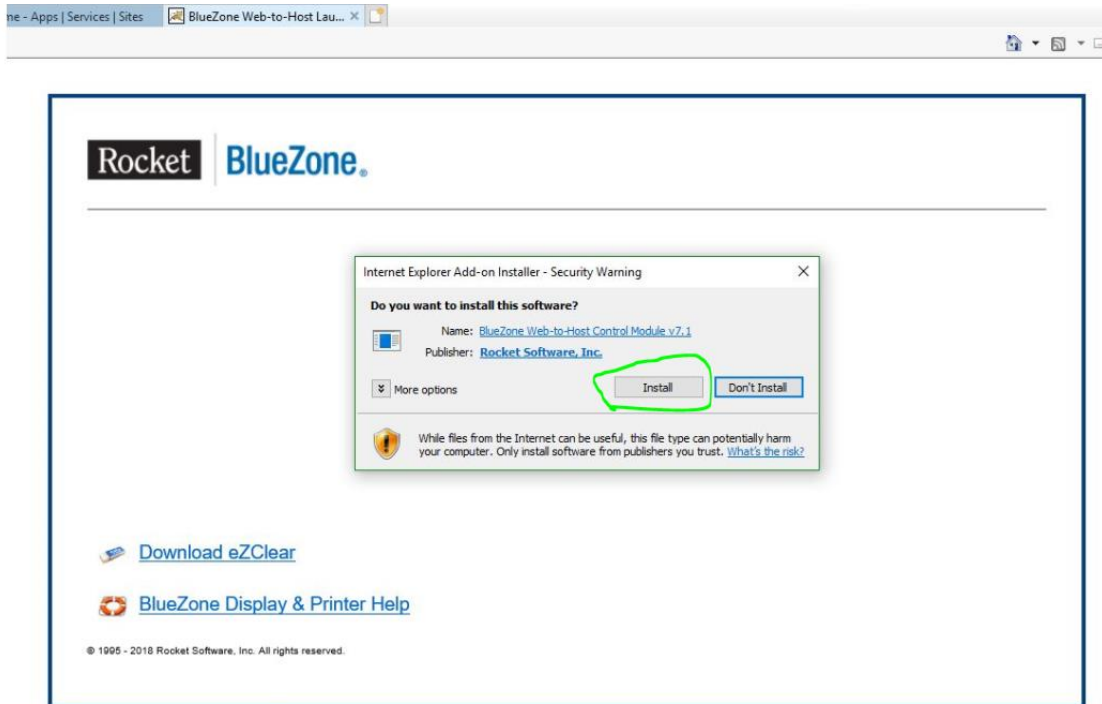
Depending on the browser you are using you will receive different messages. Internet Explorer, Chrome and Edge are the supported browsers.

Using Internet Explorer

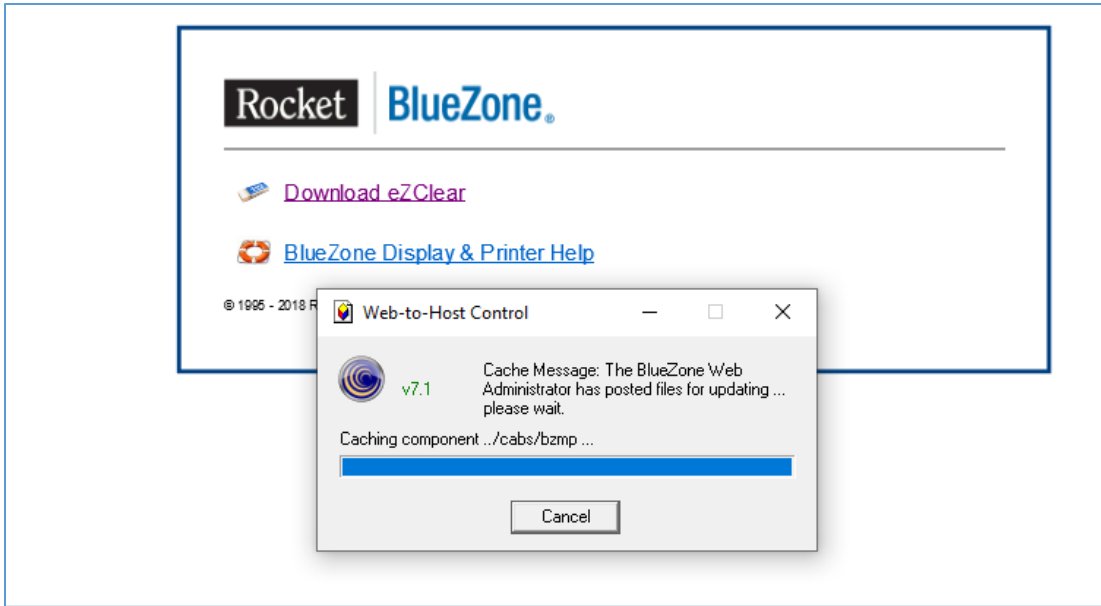
Click on Install:



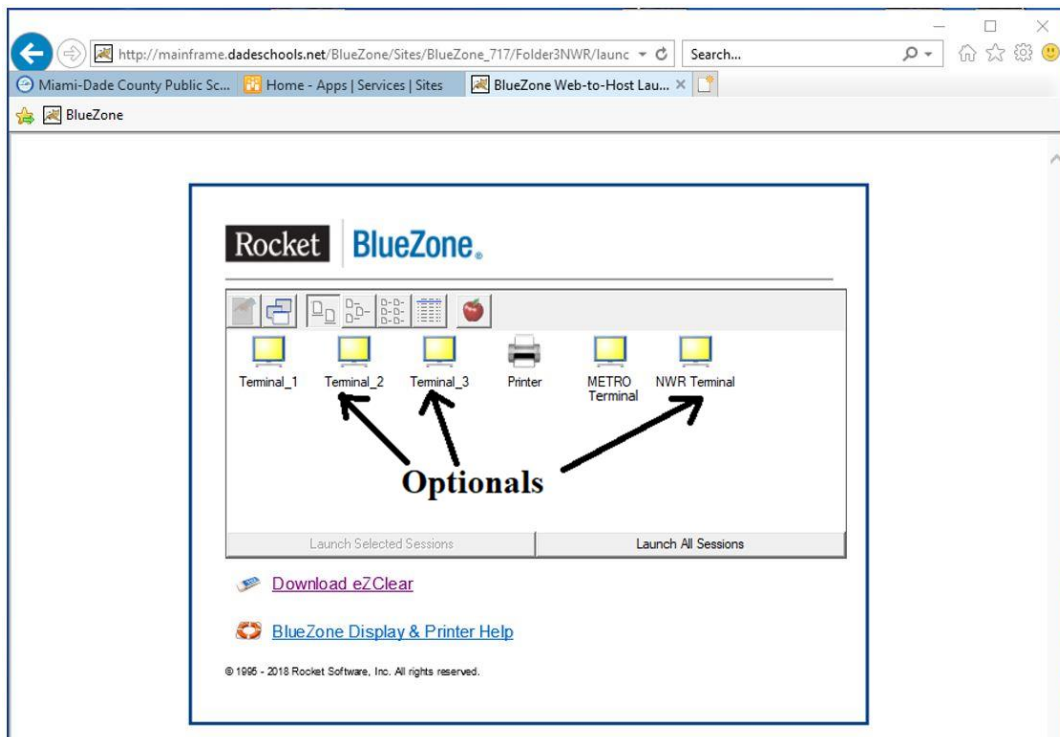
Click on Install:



The first time that you enter, you will receive the Web-to-Host installation message:

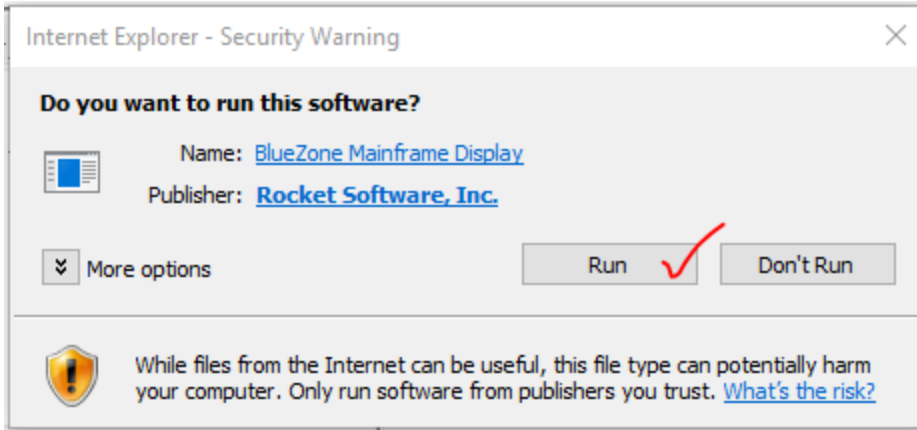


This is the main BlueZone screen where you are able to double click any of your available terminals to open them:

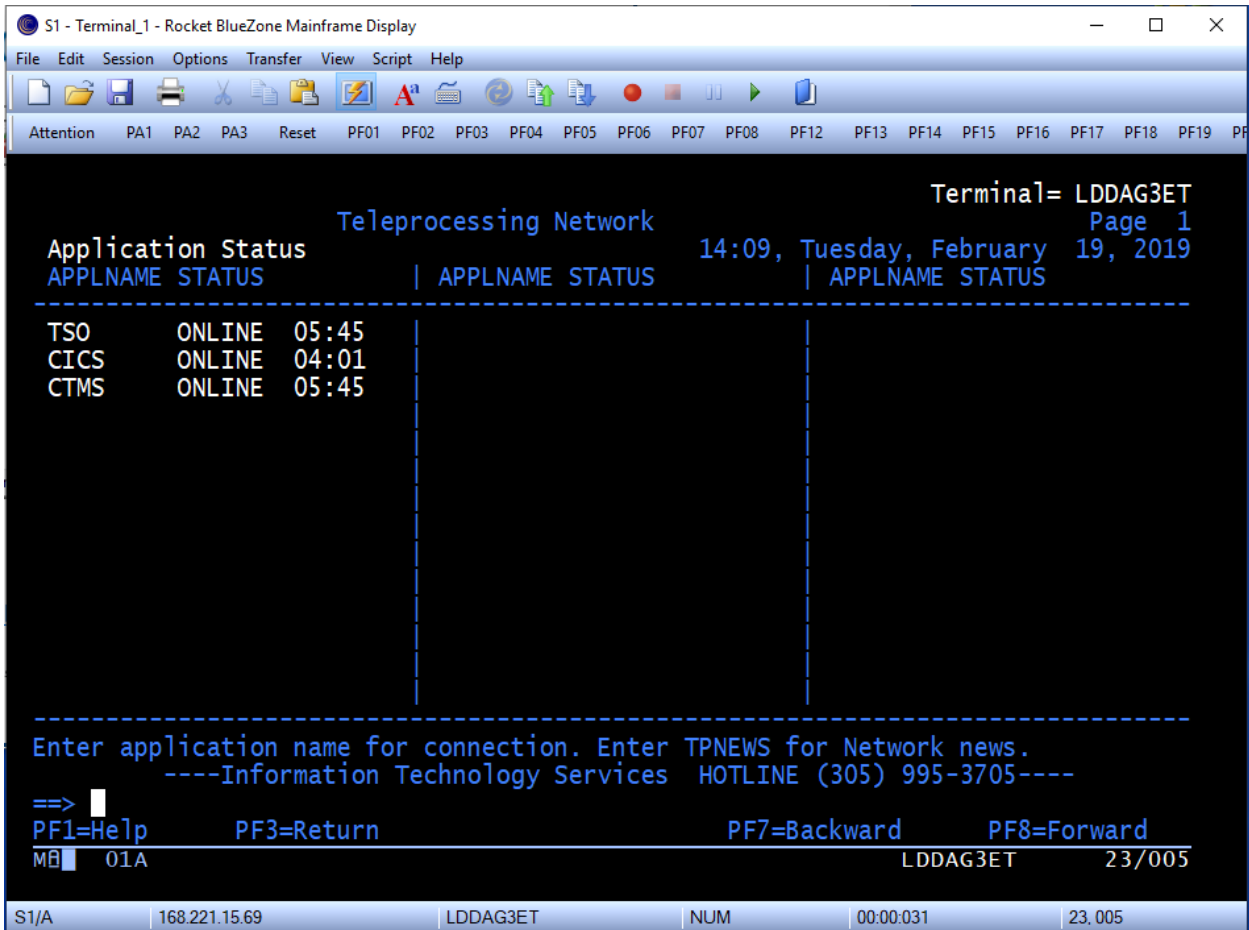


A typical end user will not see NWR (Northwest Regional) terminal.

Again, the very first time you open a Terminal or Printer session, you will receive a Security Warning window that you have to answer clicking on **Run**

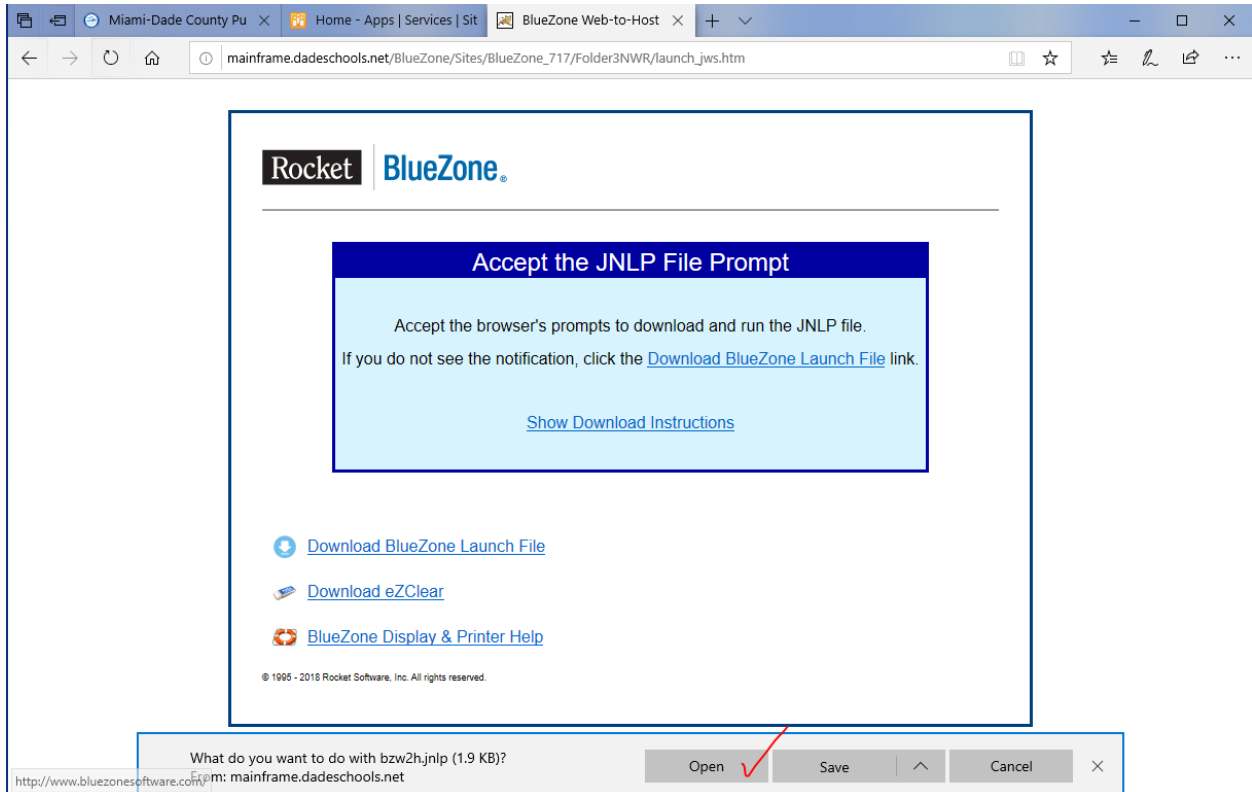


Then you will see the mainframe Terminal session

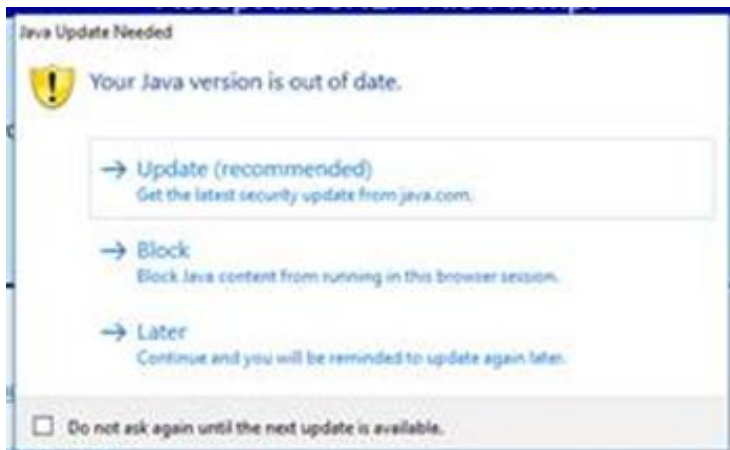


Using Edge

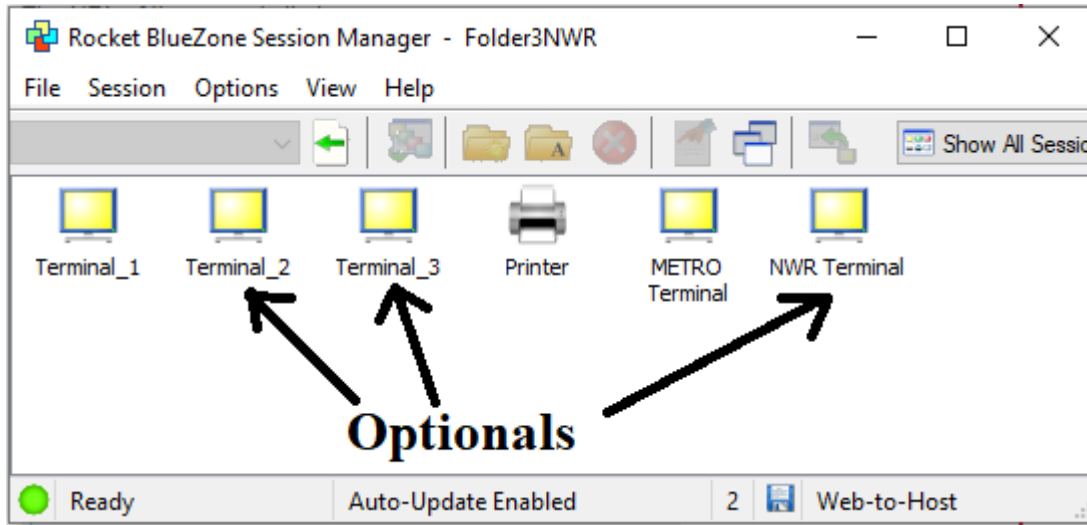
The first time that you enter, you will see the following information, click on **Open**:



If you have Java version out of date, you may receive the following “Java Update Needed”, where you could click Update or Later (to proceed with BlueZone.)

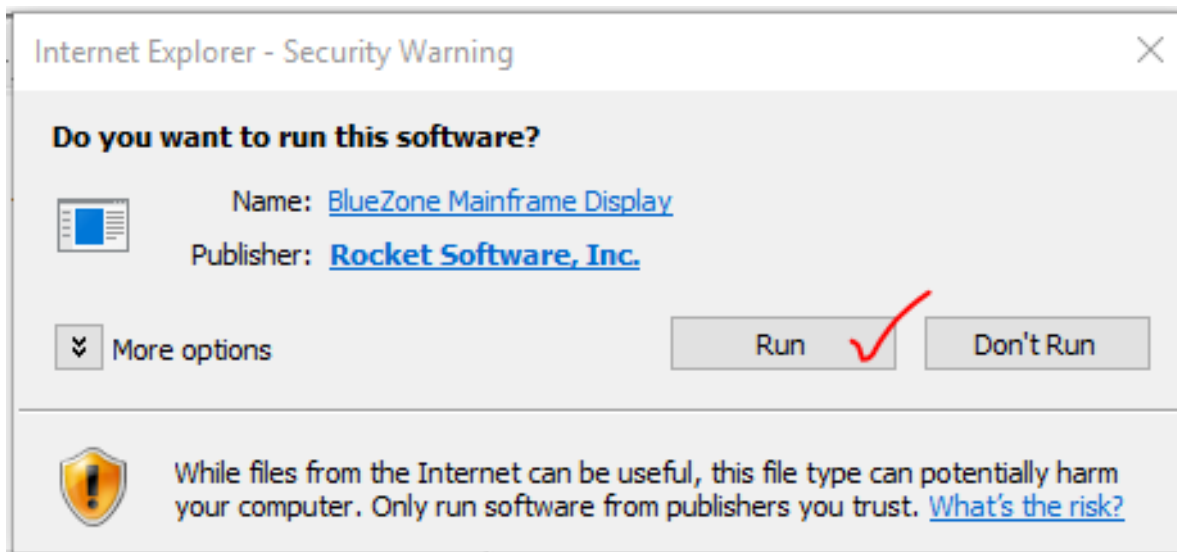


After a quick installation you will see the main BlueZone screen where you are able to double click any of your available terminals to open them:

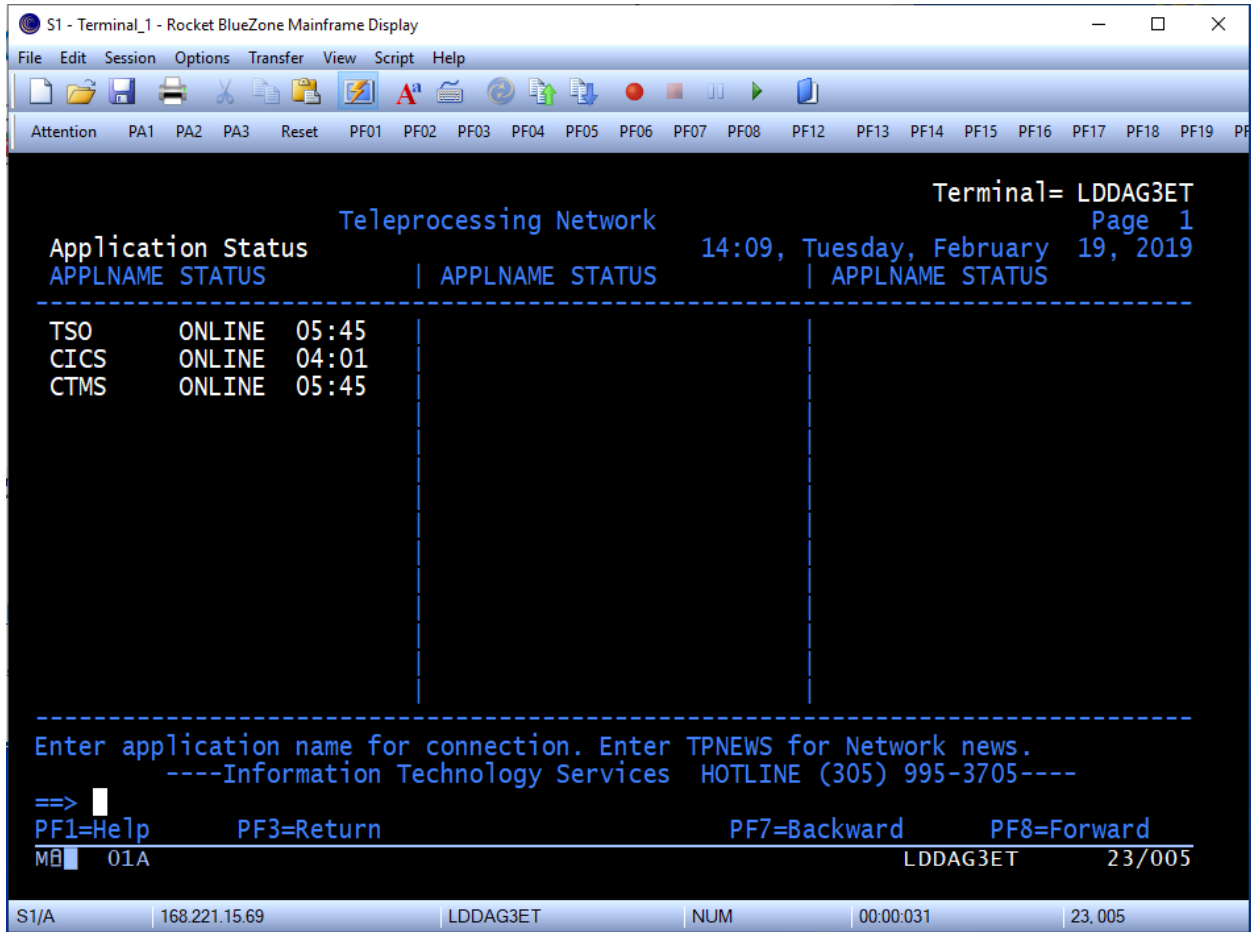


A typical end user will not see NWR (Northwest Regional) terminal.

Again, the very first time you open a Terminal or Printer session, you will receive a Security Warning window, that you have to answer clicking on **Run**:

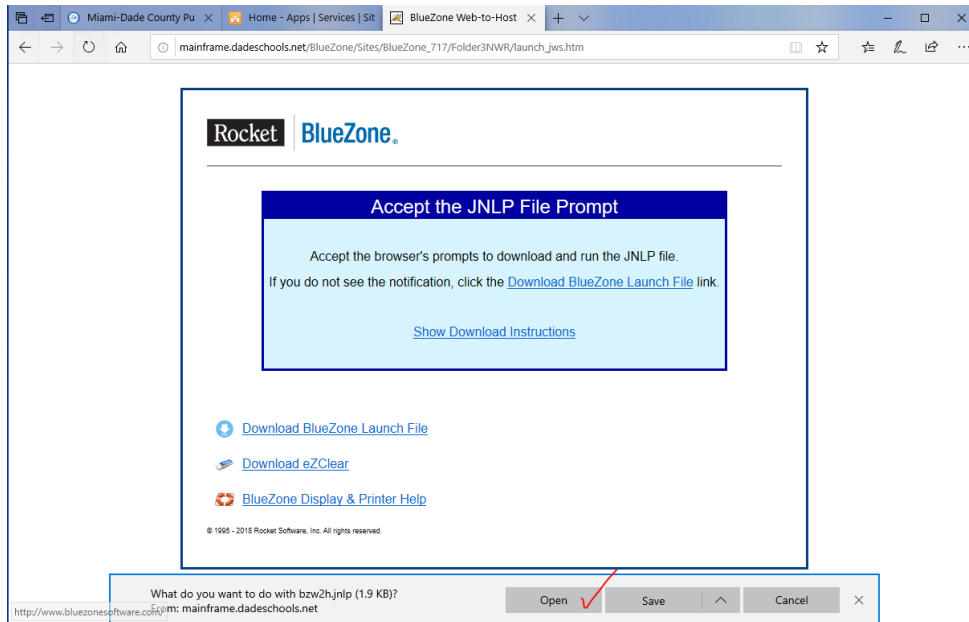


Then you will see the mainframe Terminal session:

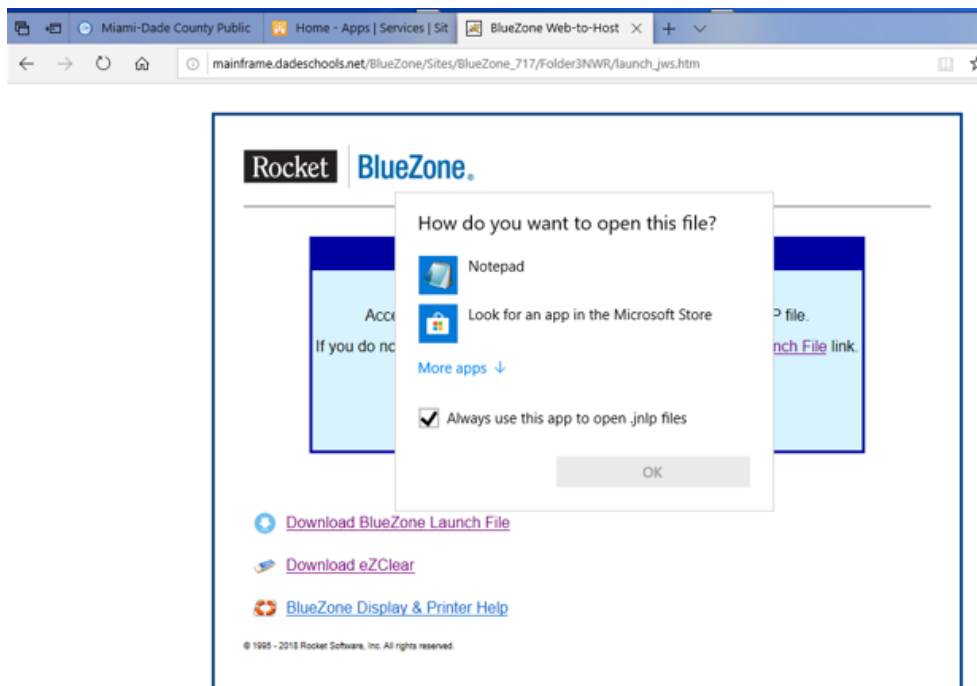


Troubleshooting – Installation – Computer Missing Java

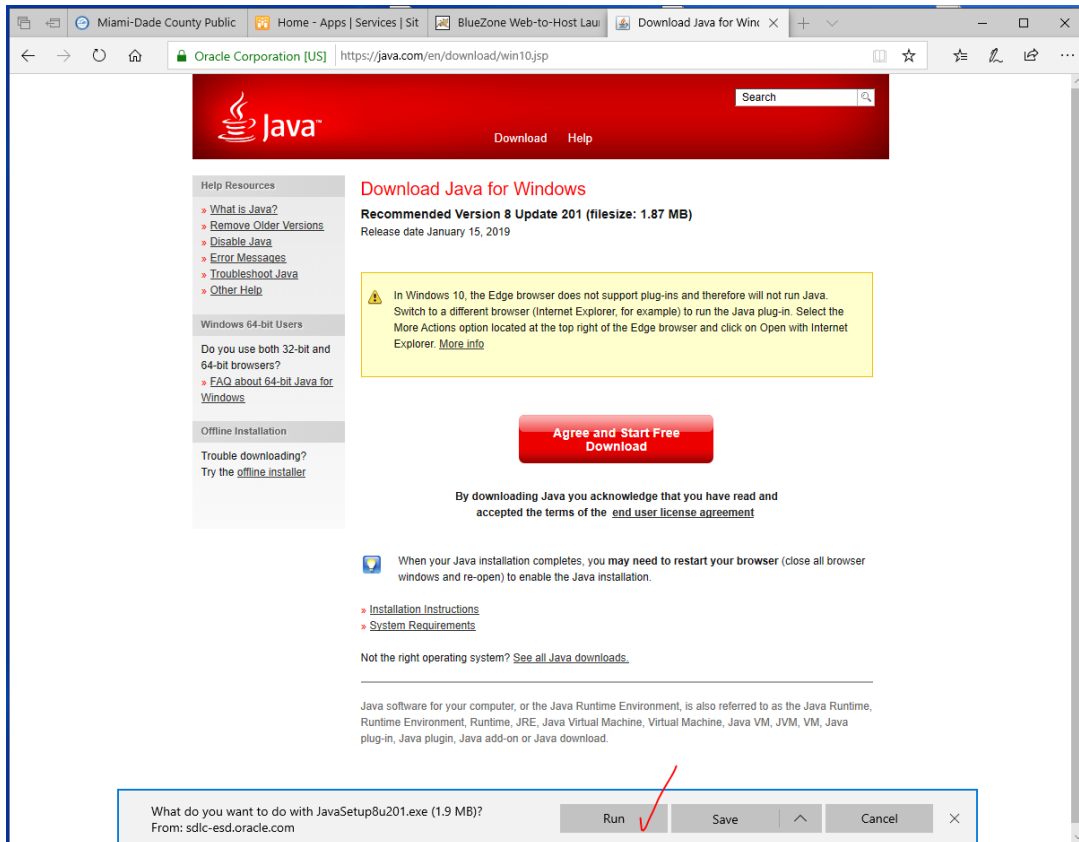
After you receive the following message to Open/Run the bzw2h.jnlp:



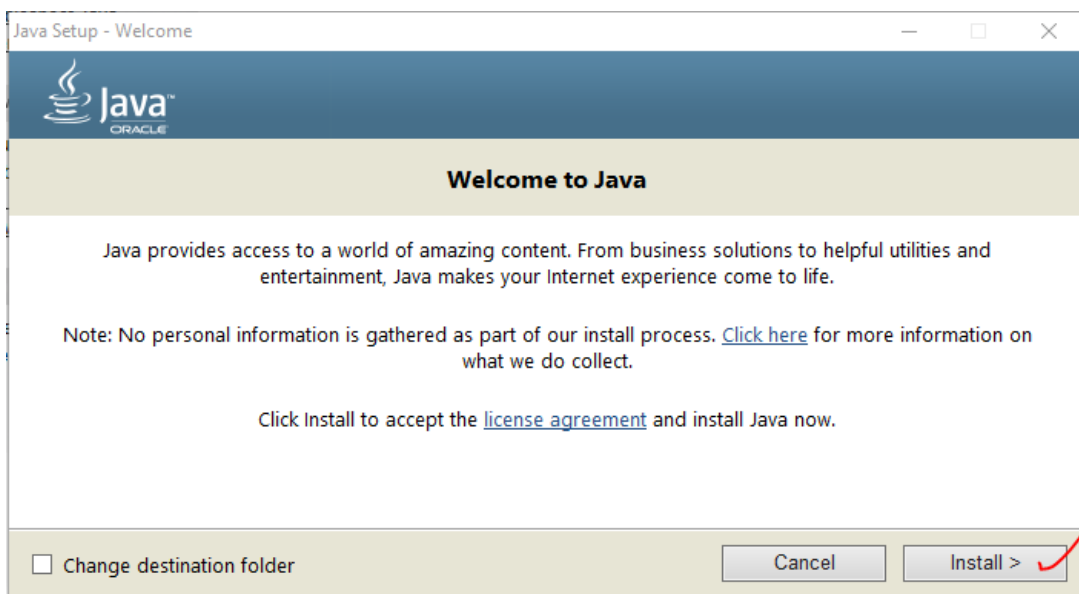
If you do not have Java installed on your computer you will receive the following message:



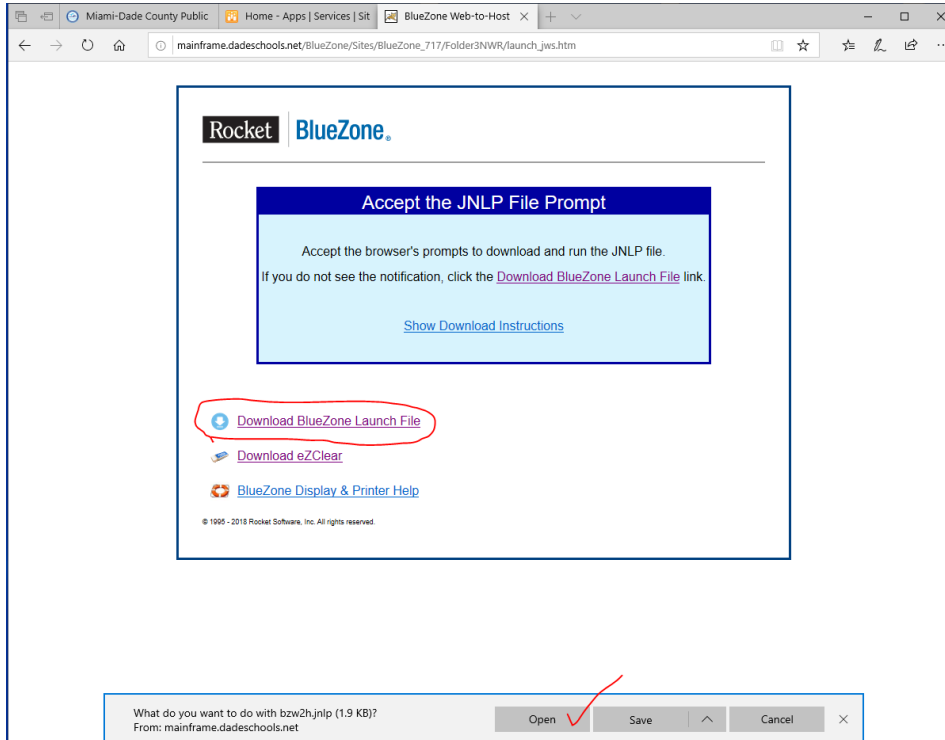
This means that you do not have Java installed to run a *.jnlp file, so you need to install Java. Go to <https://java.com/en/download> click on “Free Java Download” / click on “Agree and Start Free Download” / click on Run:



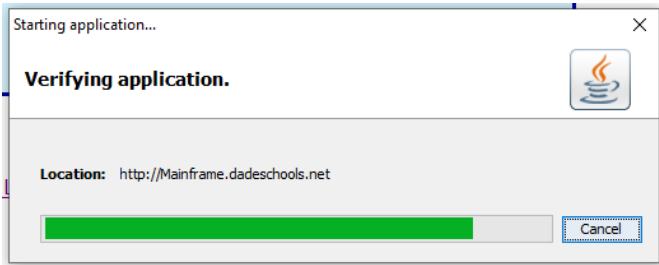
Click on Install, click OK and click Close.



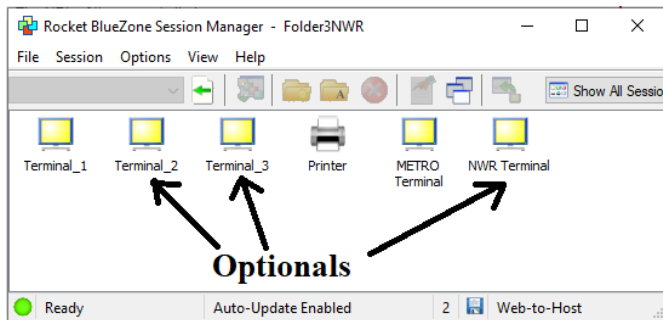
Then go back to BlueZone web page and click on Download BlueZone Launch File, then click on Open:



Then you will see this screen:



And finally, the BlueZone screen:



A typical end user will not see NWR (Northwest Regional) terminal.